

## COINS & MEDALS: Top London auction houses in 2021

Source: Antiques Trade Gazette

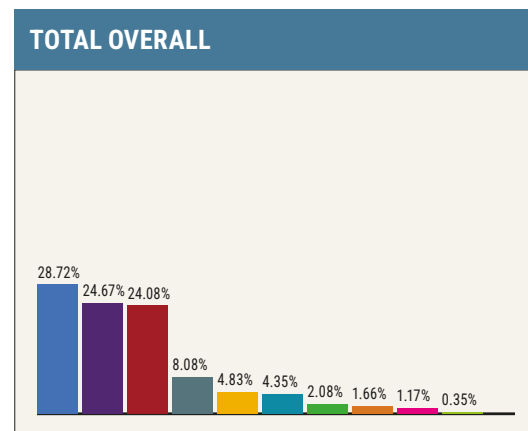
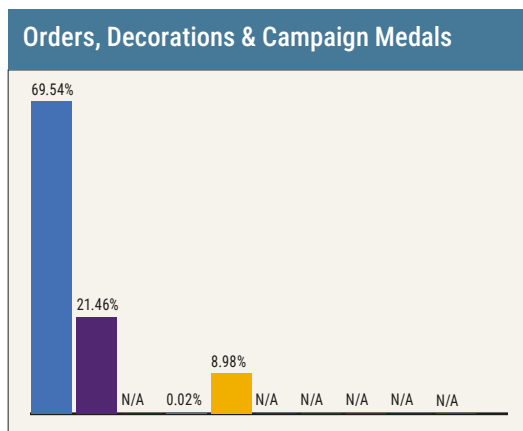
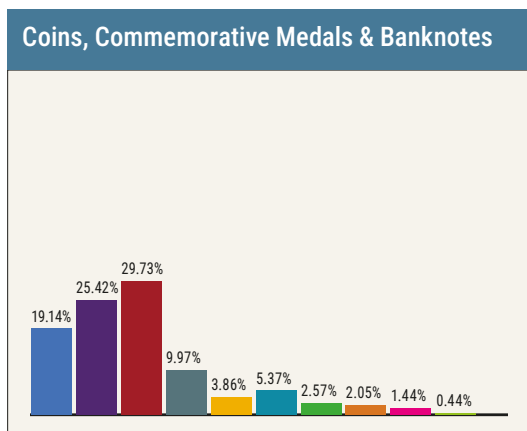
Coins, Commemorative Medals & Banknotes				
Auction House	HAMMER Market Share	YoY (%) YoY (+/-)	LOTS Market Share	YoY (%) YoY (+/-)
Dix Noonan Webb	£8,642,306 19.14%	38.27 4.36	15,611 22.45%	-0.93 -3.45
Spink	£11,477,343 25.42%	46.85 6.94	13,996 20.13%	31.45 2.63
Roma	£13,422,247 29.73%	-24.59 -12.37	26,822 38.58%	8.66 -2.01
St James's	£4,501,148 9.97%	-27.62 -4.74	6450 9.28%	28.54 1.03
Morton & Eden	£1,742,656 3.86%	-39.53 -2.96	1555 2.24%	29.48 0.26
Sovereign Rarities	£2,425,940 5.37%	N/A N/A	635 0.91%	N/A N/A
Harmers	£1,160,000 2.57%	42.81 0.65	782 1.12%	99.49 0.48
Baldwin's	£925,000 2.05%	N/A N/A	594 0.85%	N/A N/A
Bonhams	£650,545 1.44%	180.33 0.89	1263 1.82%	118.13 0.87
Timeline	£196,953 0.44%	-27.23 -0.2	1814 2.61%	-28.55 -1.57
<b>TOTAL</b>	<b>£45,144,138</b>		<b>69,522</b>	
YoY (%)	6.77%		14.31%	

Orders, Decorations & Campaign Medals				
Auction House	HAMMER Market Share	YoY (%) YoY (+/-)	LOTS Market Share	YoY (%) YoY (+/-)
Dix Noonan Webb	£7,368,665 69.54%	0.15 0.65	8310 63.19%	-9.13 -0.67
Spink	£2,273,690 21.46%	9.82 2.07	4055 30.84%	-5.74 0.79
Roma	N/A N/A	N/A N/A	N/A N/A	N/A N/A
St James's	£2,120 0.02%	-16.54 N/A	62 0.47%	87.88 0.24
Morton & Eden	£951,925 8.98%	-6.18 -0.52	722 5.49%	16.83 1.17
Sovereign Rarities	N/A N/A	N/A N/A	N/A N/A	N/A N/A
Harmers	N/A N/A	N/A N/A	N/A N/A	N/A N/A
Baldwin's	N/A N/A	N/A N/A	N/A N/A	N/A N/A
Bonhams	N/A N/A	N/A N/A	N/A N/A	N/A N/A
Timeline	N/A N/A	N/A N/A	N/A N/A	N/A N/A
<b>TOTAL</b>	<b>£10,596,400</b>		<b>13,149</b>	
YoY (%)	-0.78%		8.15%	

OVERALL TOTAL PER AUCTION HOUSE				
Auction House	HAMMER Market Share	YoY (%) YoY (+/-)	LOTS Market Share	YoY (%) YoY (+/-)
Dix Noonan Webb	£16,010,971 28.72%	17.66 3.03	23,921 28.94%	-3.94 -4.21
Spink	£13,751,033 24.67%	39.1 6.00	18,051 21.83%	20.75 1.93
Roma	£13,422,247 24.08%	-24.59 -9.53	26,822 32.44%	8.66 -0.41
St James's	£4,503,268 8.08%	-27.62 -3.67	6512 7.88%	28.92 1.15
Morton & Eden	£2,694,581 4.83%	-30.85 -2.52	2277 2.75%	25.18 0.33
Sovereign Rarities	£2,425,940 4.35%	N/A N/A	635 0.77%	N/A N/A
Harmers	£1,160,000 2.08%	42.81 0.55	782 0.95%	99.49 0.43
Baldwin's	£925,000 1.66%	N/A N/A	594 0.72%	N/A N/A
Bonhams	£650,545 1.17%	39.41 0.29	1263 1.53%	58.47 0.47
Timeline	£196,953 0.35%	-27.23 -0.16	1814 2.19%	-28.55 -1.19
<b>TOTAL</b>	<b>£55,740,538</b>		<b>82,671</b>	
YoY (%)	5.25%		10.03%	

Numbers based on totals reported to ATG by auction houses. Year-on-year figures show changes for equivalent figures for 2020 as published last year in ATG 2480. Figures for market share change show the year-on-year change in percentage points against the whole market. Notes: (i) TimeLine now holds most of its auctions in Harwich, Essex, but maintains premises in Berkeley Square, London. (ii) Tables published last year showed totals for Baldwin's of St James's. This year's tables show separate totals for St James's and for Baldwin's. Year-on-year change figures for St James's are based on the 2020 numbers for Baldwin's of St James's (whereas no year-on-year calculations have been stated for Baldwin's).

## HAMMER MARKET SHARE: Across London's numismatic auctions



Dix Noonan Webb Spink Roma St James's Morton & Eden Sovereign Rarities Harmers Baldwin's Bonhams TimeLine

## MARKET SIZE: Total annual hammer value at London's coins & medals auctions (banknotes added in 2014)

